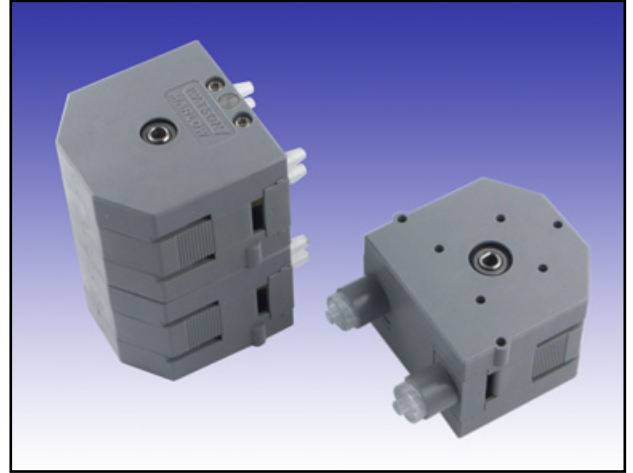


## 400/M, N Single and multi channel pumpheads

### Technical information and features

- Robust and compact design (50 x 50mm)
- Completely closed, yet easy to use
- Tube elements makes the tube loading quick and trouble free
- Tube elements in Santoprene, Silicone and Peristaltic PVC
- Available in chemical resistant material
- Max speed 500 rpm
- Intermittent speed up to 800 rpm
- Double rubber sealed ball bearings
- Stacked versions offers up to 8 channels



**400/N4 and 400/M1 Pumpheads**  
(400/M1 shown from the mounting side)

### 400/M

#### Flow Rates

Santoprene tubing, 1,6mm wall  
Zero pressure and no suction height

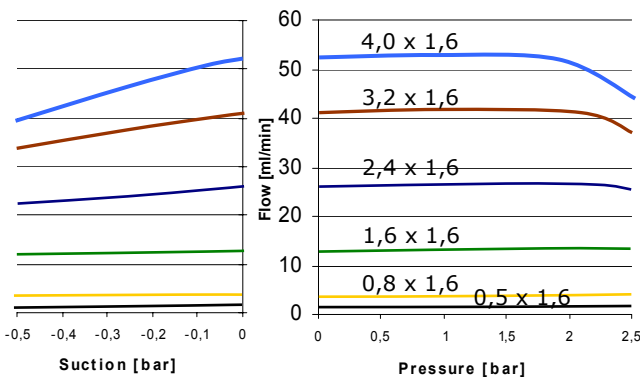
Tube bore mm	ml/rev	Max cont. flow
0,5	0,016	8 ml/min
0,8	0,037	18 ml/min
1,6	0,13	65 ml/min
2,4	0,26	130 ml/min
3,2	0,41	200 ml/min
4,0	0,52	260 ml/min

All flow figures are nominal and may vary about ±10% due to tube tolerances

### 400/M

#### Pressure/Suction Charts

Santoprene tubing @100 rpm



### 400/N

#### Flow Rates

Santoprene tubing, 1,0mm wall  
Zero pressure and no suction height

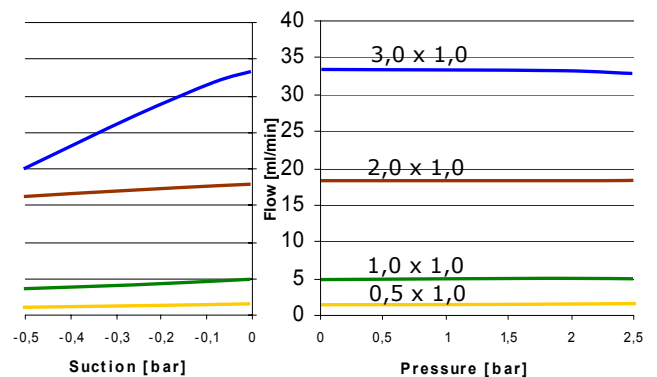
Tube bore mm	ml/rev	Max cont. flow
0,5	0,013	7 ml/min
1,0	0,050	25 ml/min
2,0	0,18	90 ml/min
3,0	0,33	150 ml/min

All flow figures are nominal and may vary about ±10% due to tube tolerances

### 400/N

#### Pressure/Suction Charts

Santoprene tubing @100 rpm



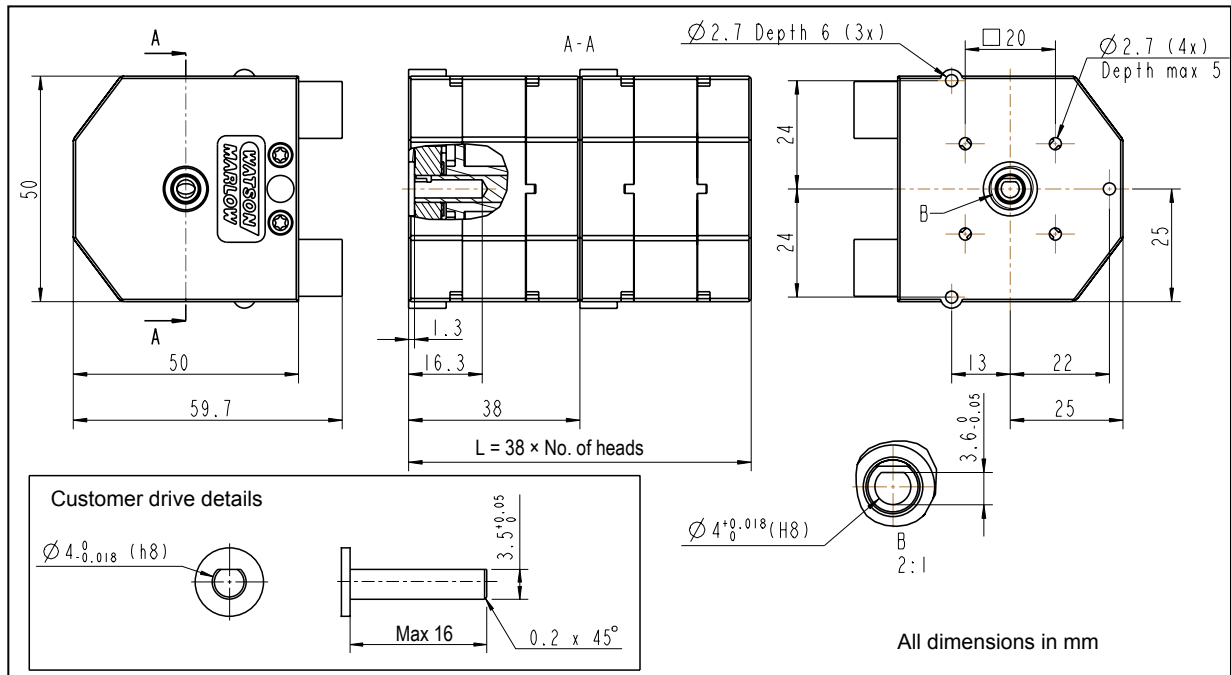
## Product Codes

### 400/M

Channels	Req. Torque Santoprene tubing	Req. Torque Silicone tubing	Product code standard	Product code PVDF
1	150 mNm	130 mNm	043.001M.E1C	043.001M.E1P
2	270 mNm	240mNm	043.001M.E2C	043.001M.E2P

### 400/N

Channels	Req. Torque Santoprene tubing [Nm]	Req. Torque Silicone tubing [Nm]	Product code standard	Product code PVDF
2	250 mNm	220 mNm	043.001N.N2C	043.001N.N2P
4	450 mNm	400 mNm	043.001N.N4C	043.001N.N4P



### 400/M, N

## Materials of Construction

### Standard

Pump house	Acetal (Grey)*
Rotor	Acetal (Black)
Rollers (4 ea)	Acetal (Black)
Track	Acetal (Grey)*
Shafts	Stainless steel
Screws	Stainless steel

### PVDF

PVDF
PVDF
PVDF
PVDF
Acid proof SS
Stainless steel

\* Optional colours: Red, Blue

## Customised Solutions

If you don't find exactly what you are looking for in this data sheet a customised product could be the solution. These pumpheads can be delivered in any stacked combination, fitted on a customised mounting panel, with other shafts, for alternative tube sizes and more.

**Belgium**  
Telephone +32 (0) 2 481 60 57  
Fax: +32 (0) 2 481 60 58  
info@watson-marlow.be

**France**  
Telephone +33 (0) 2 37 38 92 03  
Fax: +33 (0) 2 37 38 92 04  
info@watson-marlow.fr

**Germany**  
Telephone +49 (0) 2183 42040  
Fax: +49 (0) 2183 82592  
info@watson-marlow.de

**Italy**  
Telephone +39 030 6871184  
Fax: +39 030 6871352  
info@watson-marlow.it

**Netherlands**  
Telephone +31 (0) 10 462 1688  
Fax: +31 (0) 10 462 3486  
info@watson-marlow.nl

**South Africa**  
Telephone +27 11 794 1921  
Fax: +27 11 794 1250  
info@wmbpumps.co.za

**United Kingdom**  
Telephone +44 (0) 1326 370370  
Fax: +44 (0) 1326 376009  
support@watson-marlow.co.uk

**United States of America**  
Telephone 800 282 8823  
Fax: 978 658 0041  
support@wmbpumps.com



**W-M Alitea AB**

**Sweden**  
Telephone +46 8 556 556 00  
Fax: +46 8 556 556 25  
info@alitea.se

See [www.alitea.se](http://www.alitea.se) for more information about our products.  
W-M Alitea reserves the right to alter specifications without notice